

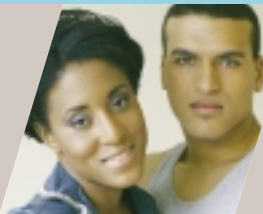


Illustrations are
artist's concept.



Somerset Homes

Daniels Street



7 unique detached family homes in the Queensway area.

Home Features

Enjoy numerous recreational opportunities at the nearby South Humber Parklands, linking to the Martin Goodman Trail which spans Toronto's waterfront and is enjoyed by walkers, joggers, cyclists and in-line skaters alike. With the popular Costco, Ikea and Winners nearby, shoppers will find value and a wide variety of products. Or see first-run movies, in comfort, at the large Queensway movie theatre complex.

Bus service on Royal York Road and on Islington Avenue connect passengers to stations on the Bloor-Danforth subway line. The Islington station also provides an express bus service to the airport and a connection to Mississauga Transit.



The Queensway area offers convenient access to downtown Toronto's financial and entertainment districts in approximately ten minutes via the Gardiner Expressway. Or easy access to points West via the QEW.

These homes feature:

- ◆ Open concept main floor living and dining room with oak hardwood floors
- ◆ 3 or 4 spacious bedrooms including master ensuite with walk-in closet as per model selected
- ◆ 3 or 4 luxurious full bathrooms plus main floor powder room as per model selected
- ◆ Kitchen comes complete with stainless steel fridge, stove and dishwasher
- ◆ Granite kitchen countertops and stainless sink and European style taps
- ◆ Finished basement with finished 3 piece washroom and exercise room, bedroom or home office, and a basement laundry, cantina/storage room
- ◆ Magnificent brick, natural stone and pre-cast details
- ◆ Extensive landscaping
- ◆ Brick garages with rollup doors, separate entrance and window, as per model selected
- ◆ Natural Gas rough in for BBQ on deck and in kitchen
- ◆ Security, telephone and vacuum systems rough-in

Site Plan



Spacious Dining & Living Room

- ◆ Main floor powder room and fireplace
- ◆ Open concept main floor living, dining and family room, all with prefinished 3/4 " oak hardwood flooring



Illustrations are artist's concept.

Fabulous Eat-in Kitchen



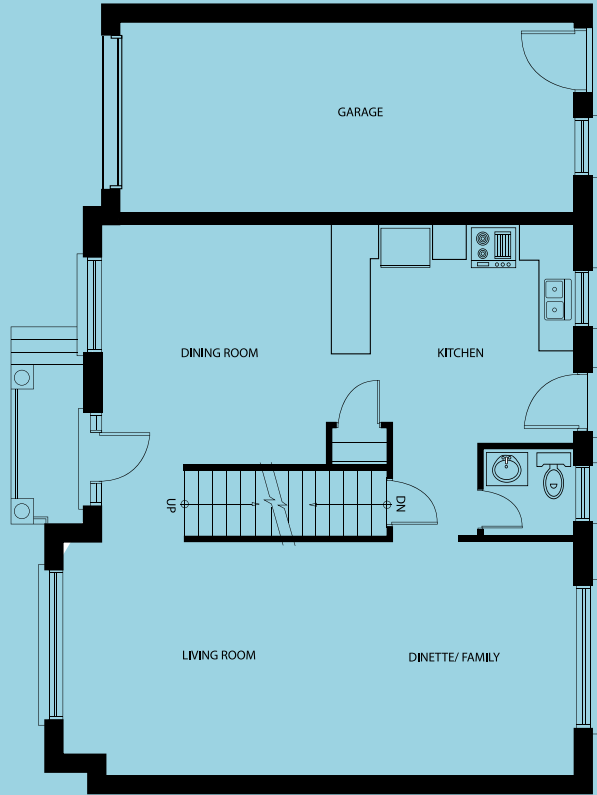
- ◆ Kitchen comes complete with a stainless steel fridge, stove and dishwasher
- ◆ Granite kitchen countertops with undermount sink and European style taps



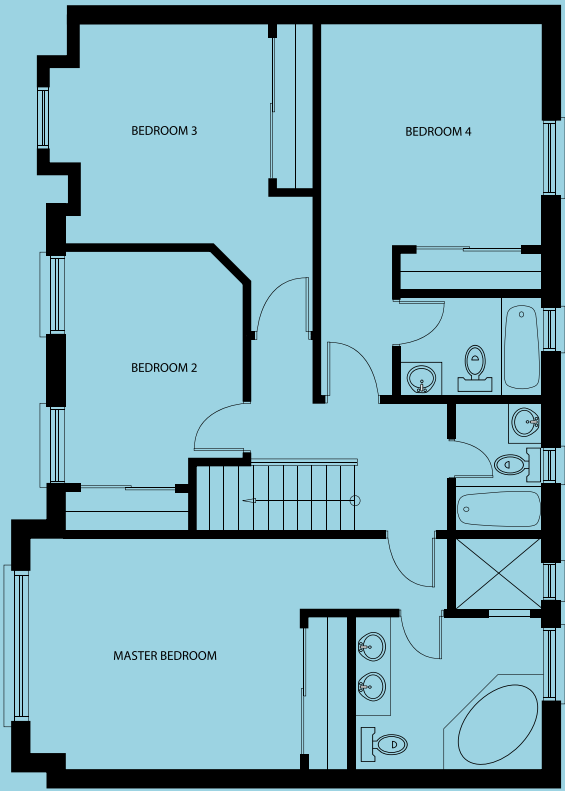
Illustrations are artist's concept.

Floor Plans: Units 1-4

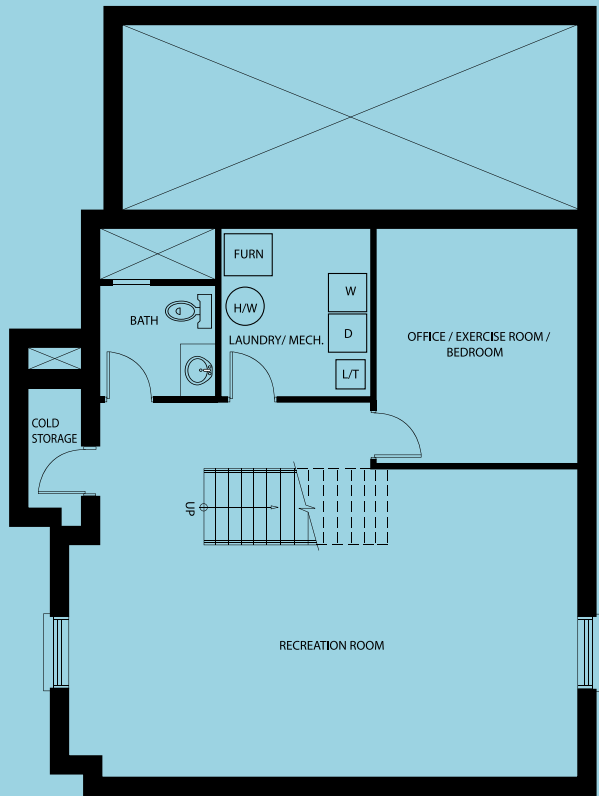
Specifications are subject to change without notice. E.&O.E.
Some houses are reverse model.



First Floor



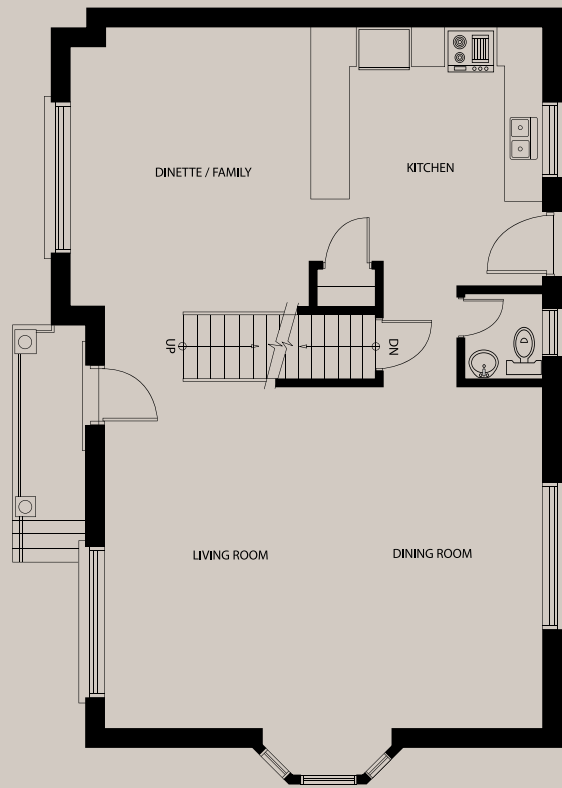
Second Floor



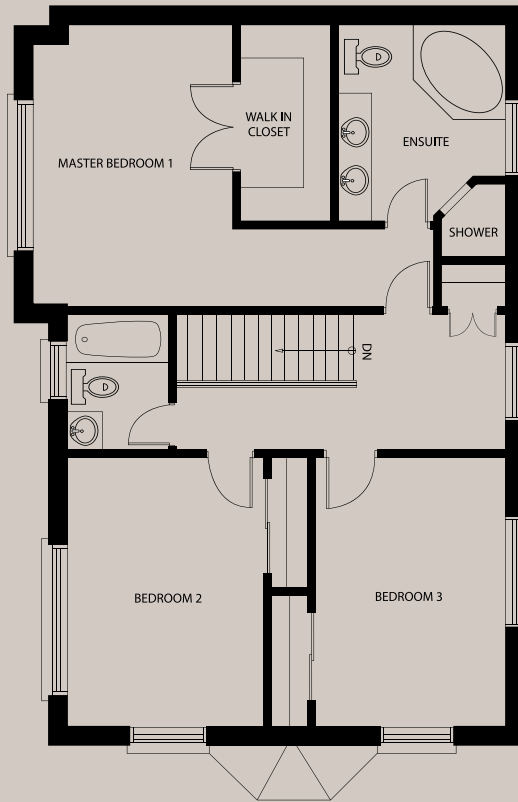
Basement

Floor Plans: Units 5 & 6

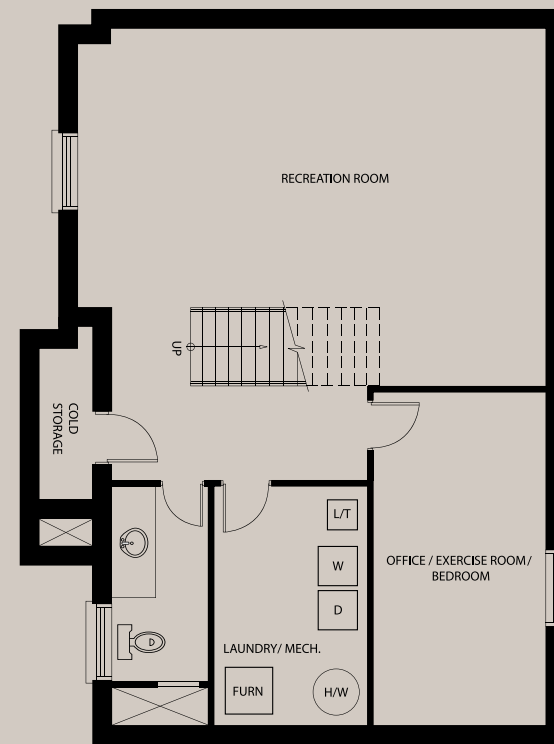
Specifications are subject to change without notice. E.&O.E.
Some houses are reverse model.



First Floor



Second Floor



Basement



Excellent Builder



*This symbol means:
Rated EXCELLENT By the Ontario New Home Warranty Program*

In the "Home Buyer's Guide to Ontario Builders," published by TARION previously known as the Ontario New Home Warranty Program, the symbol of two solid houses beside a builder's name as shown above indicates that the builder has achieved an EXCELLENT rating. Somerset Homes is proud to have earned such a rating and to be recognized as one of a select group of Ontario's top builders.

We at Somerset Homes have continually strived to meet and exceed the minimum standards of quality set by the Warranty Program for the housing industry. It has always been our goal to maintain an unblemished after-sales service reputation through prompt and professional service to our customers. At Somerset Homes we believe the key to success has been our commitment to quality and service and we will do everything that we can to carry on with this commitment in the future.

Recognized by TARION as an EXCELLENT BUILDER



Somerset Homes